

Breaking the Glass Ceiling

National Organization of Minority Architecture Students (NOMAS)

Symposium 2015 – Student Competition

At the University of Illinois at Urbana-Champaign

History

On February 14, 1969, a group of black students submitted a list of demands to University of Illinois Chancellor Jack Peltason calling for the end of institutional racism. One of the demands called for the immediate establishment of a black cultural center large enough to serve the needs of black students and the community. On February 18, 1969 the UC Senate Council recommended that a temporary center be established and placed under the supervision of Clarence Shelley, the Director of the Special Education Opportunities Program. Shortly thereafter a faculty student commission was established consisting of three units, academic, cultural and community. In the Fall of 1969 the Afro-American Cultural Program opened its doors.

From the outset, the Program was conceived to be grass roots oriented with community input and outreach. The program had two major goals: to encourage within Black students of the university a sense of pride and dignity based on their cultural heritage and to create a safe place for students to develop themselves individually and collectively; secondly, to create within the university a place where the campus could learn about the contributions of Black citizens to the campus and larger national culture. This same two-fold mission is relevant today and continues to drive our work on behalf of students.

In 1969 the Afro-American Cultural Program was created with the two-fold purpose of assisting the university in providing a safe and welcoming environment for African American students and a resource to the campus at-large regarding African American contributions and issues.

The focus of the Bruce D. Nesbitt African American Cultural Center (BNAACC) is to:

- Help the campus create a culturally respectful campus environment.
- Provide leadership and professional opportunities for students.
- Promote African American culture through the performing arts.

Now a full-fledged cultural center, the Bruce D. Nesbitt African American Cultural Center remains a vital part of the institution and serves as a resource not only for students of African descent, but all Illinois students.

Currently the Bruce D. Nesbitt African American Cultural Center is in a temporary location on 51 E. Gregory Dr. Champaign, IL 61820. The old facility on 708 S Mathews Urbana, IL 61801 is proposed to be demolished and replaced with a new facility. Members of BNACC are looking for student ideas of what this new facility will look like.

Competition Brief

The Bruce Nesbitt African American Cultural Center is in the process of gaining a new facility to house their programs offered to the campus in a central location. This competition is an opportunity to provide

design proposals of what that facility will look like. These designs will enhance the campus programmatically and aesthetically. Create a proposed design for a new BNAACC center located on 708 South Mathews avenue Urbana, Illinois. Using the square footage available on the site (12,000 SQ. FT.), the program within the building will be decided by each team according to the needs and desires of the center and based on the programs offered currently.

Design Content Description

- Implement a design proposal for a new Bruce D Nesbitt African American Cultural Center (BNAACC)
- SITE: Previous BNAACC Location on Nevada:
708 South Mathews Avenue
Urbana, IL 61801
- 12,000 SQ. FT. Limit
- REQUIRED PROGRAMS
 - ADA Accessibility
 - HISTORIC PRESERVATION OF MURAL INSIDE HOUSE
- SUGGESTED PROGRAMS
 - Performance Space
 - WBML Radio Station
 - Study Rooms
 - Computer Lab
 - Seminar Rooms
 - Office Spaces

(Please refer to the BNAACC website: go.illinois.edu/BNAACC for more information about the Center)

Participation Requirements

- Any student (Undergraduate/ Graduate) enrolled at a University may participate
- REQUIRED to attend the NOMAS SYMPOSIUM SEPTEMBER 18, 2015

REQUIRED DRAWINGS

- Floor Plan(s)
- (1) Interior Rendering (mural included)
- (1) Exterior Rendering
- Additional drawings and physical models are OPTIONAL and are not limited
- Hand drawings are allowed
- All drawings must fit on (1) 36x36 panel**

Team Regulations

- 1 – 3 PEOPLE **MAX** PER GROUP
- PARTICIPATION FEE: \$15
 - * Fee will be used for final printing cost

Schedule

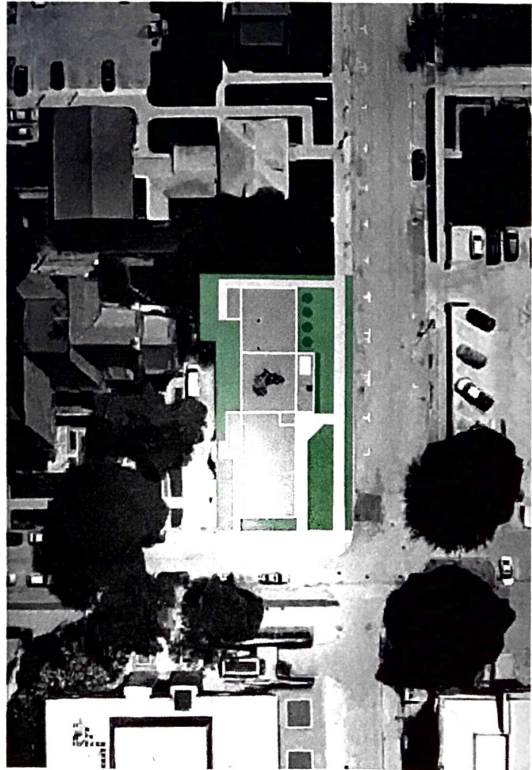
- REGISTRATION: **OPENS SEPTEMBER 19, 2015**
 - **[Register Online](#)
- GROUP SELECTION & DEPOSIT DUE: **JANUARY 1, 2016**
- SUBMISSION DUE: **JANUARY 31, 2016**

Bruce D. Nesbitt African American Cultural Center

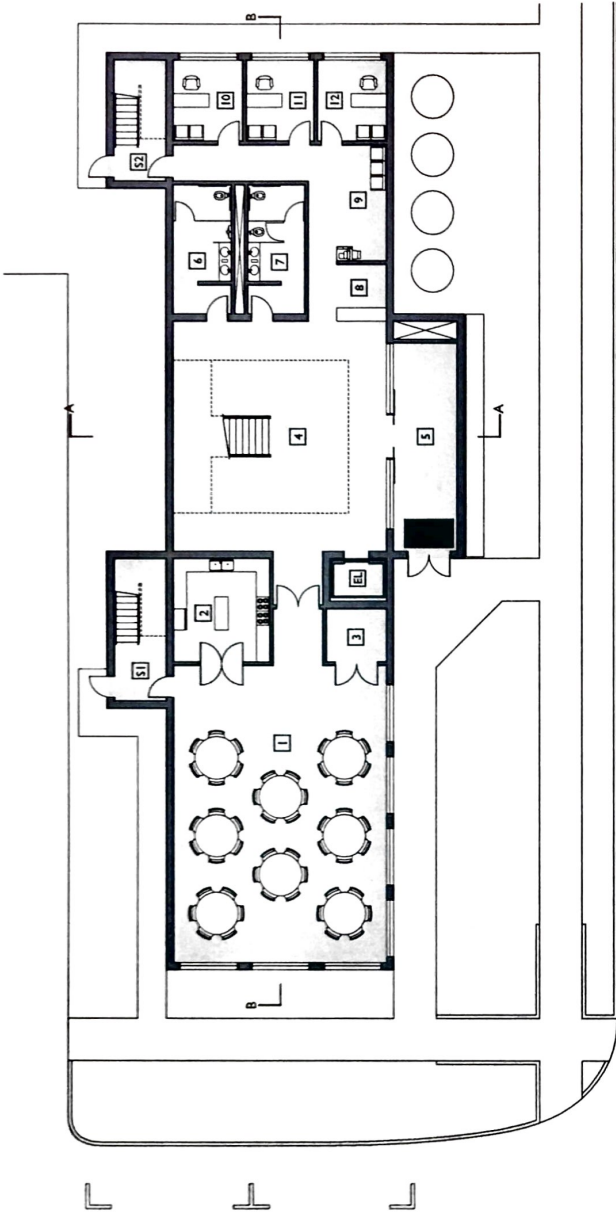
This design proposal for the BNAACC intends for the building to be used in a wide variety of ways and bring a part of Africa to the University of Illinois campus. When entering the building, one is welcomed with an open atrium featuring a main staircase, African skylight, and the mural that was located in the previous building. This atrium serves as the main circulation space for the building and connects the four separate spaces: offices, events, studies, and the arts. The west portion of the first floor serves as a multi-functional event space intended to hold banquets, conferences, concerts, and lectures. Included in the space is a fully functional kitchen and storage space for event setup. The offices occupy the east section of the first floor and include 3 individual offices for the director and two assistants and a common space for office equipment such as copy machines. On the west side of the second floor is the student common space which shares space with the library and includes 3 private rooms for students to use for group study or meetings. The east portion of the second floor features the arts with a gallery displaying paintings, sculptures, and other works and the building's radio broadcast room.

Floor Plan Key

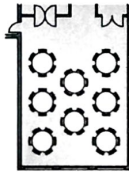
- | | |
|----|-------------------------------------|
| 1 | Flexible Event Space (see diagrams) |
| 2 | Kitchen |
| 3 | Event Storage Room |
| 4 | Lobby Atrium |
| 5 | Entry Vestibule |
| 6 | Men's Restroom |
| 7 | Women's Restroom |
| 8 | Reception Desk |
| 9 | Office Common Space |
| 10 | Assistant's Office |
| 11 | Assistant's Office |
| 12 | Director's Office |
| 13 | Student Collaboration Room |
| 14 | Student common Space and Library |
| 15 | Mechanical Room with Roof Access |
| 16 | Radio Broadcast Room |
| 17 | BNAACC Gallery |
| EL | Elevator |
| S1 | Fire Stair 1 |
| S2 | Fire Stair 2 |



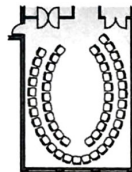
Site Plan
Scale: 1/16" = 1'-0"



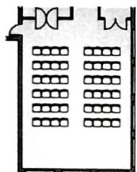
First Floor Plan
Scale: 1/16" = 1'-0"



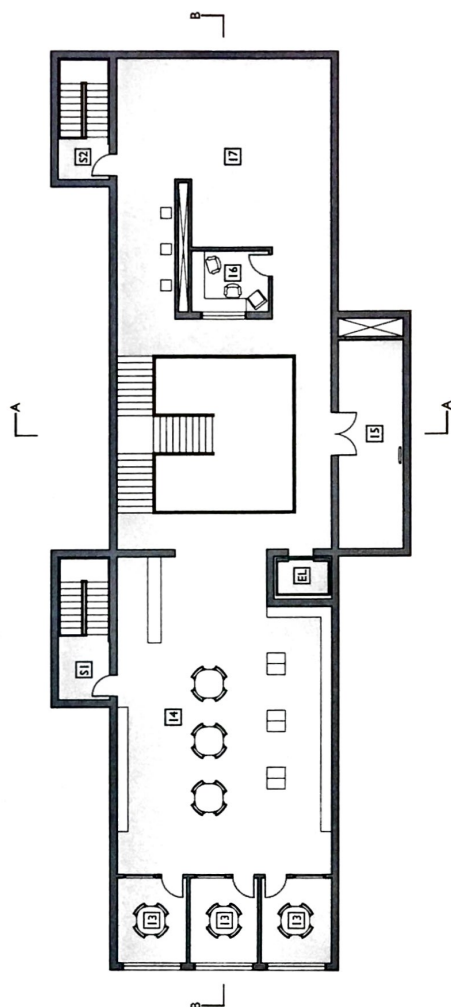
Banquet Configuration
Scale: 1/16" = 1'-0"



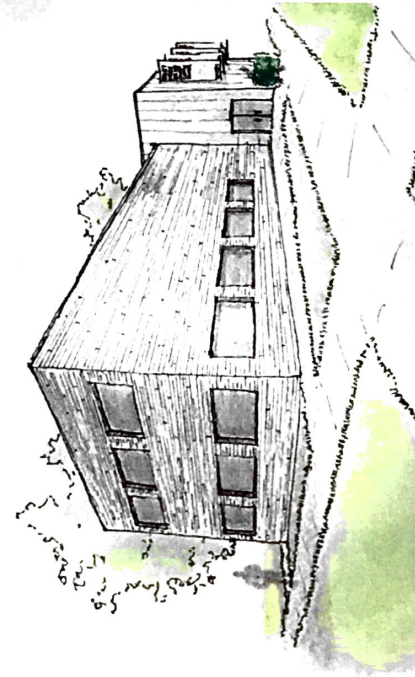
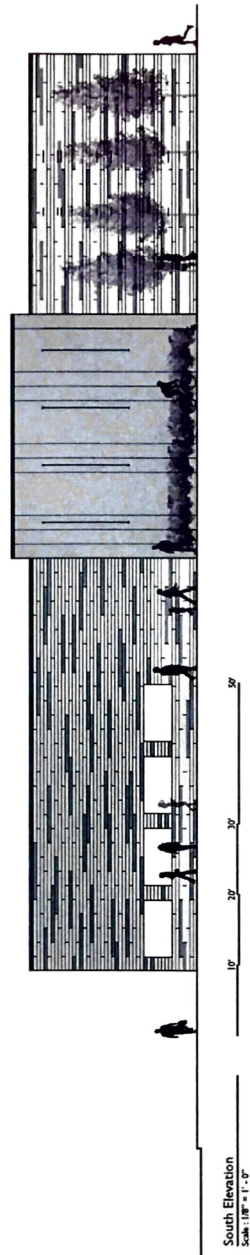
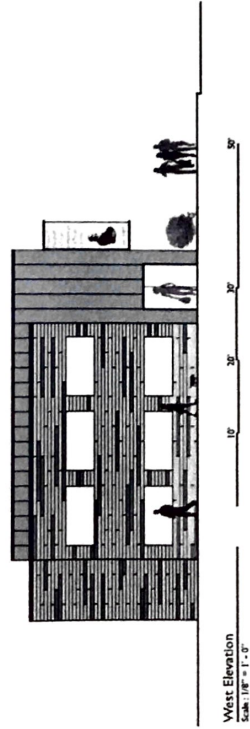
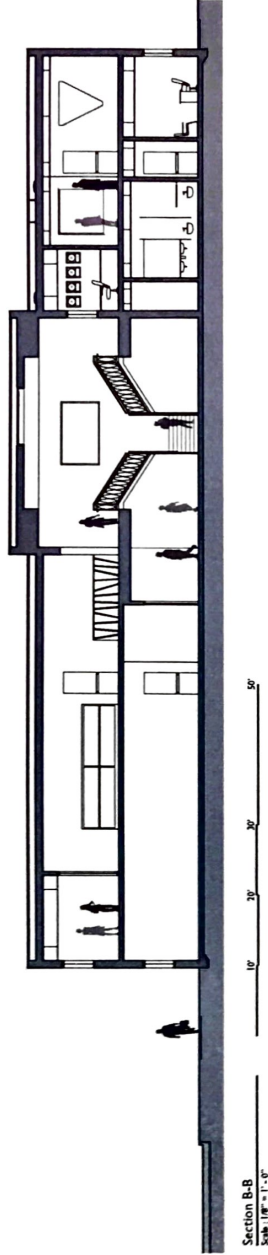
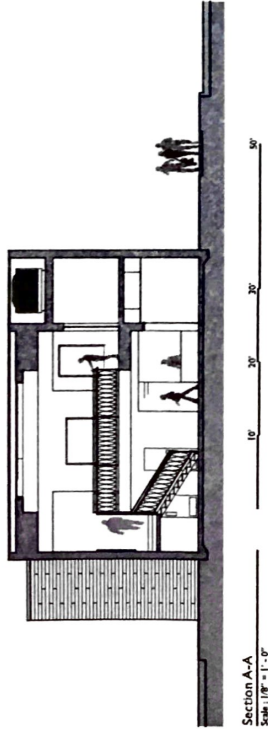
Dance Configuration
Scale: 1/16" = 1'-0"



Concert Configuration
Scale: 1/16" = 1'-0"



Second Floor Plan
Scale: 1/16" = 1'-0"



Exterior Hand Rendering

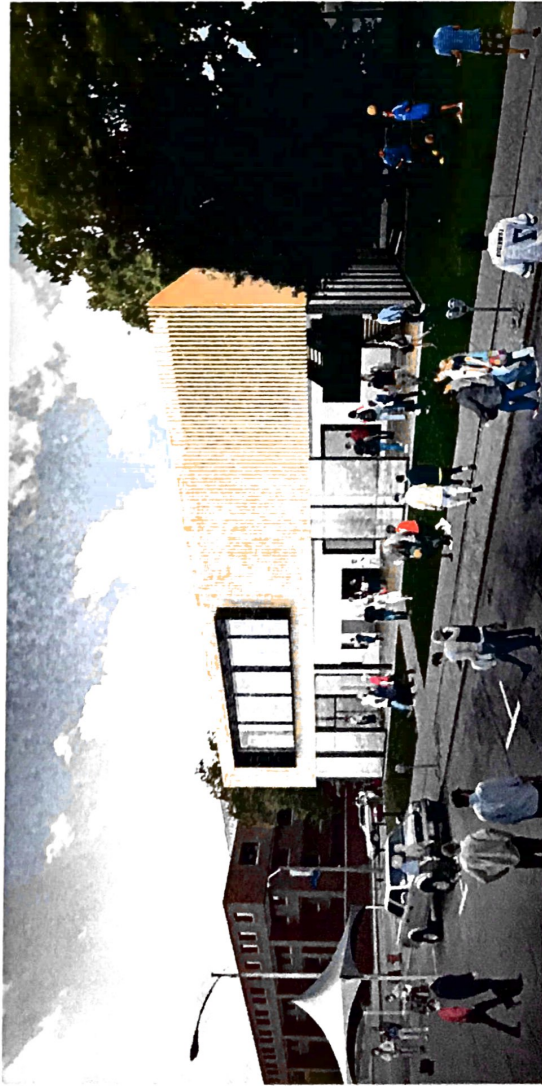


Interior Hand Rendering

Bringing Africa to Champaign-Urbana

Focusing on the atrium, the design pulls from different parts of Africa to come together at the BNAACC. The floor is decorated in African patterns while the ceiling features thatching, a popular type of construction throughout the continent. The grand staircase will be decorated with different patterned shields from different regions to represent the large number of people in Africa. The skylight in the center of the atrium not only lets in light, but will also project the continent on the north wall which will align with the mural from the previous building twice during the year.

BRUCE D. NESBITT AFRICAN AMERICAN CULTURAL CENTER



TRUE TO THE ORIGINAL MISSION

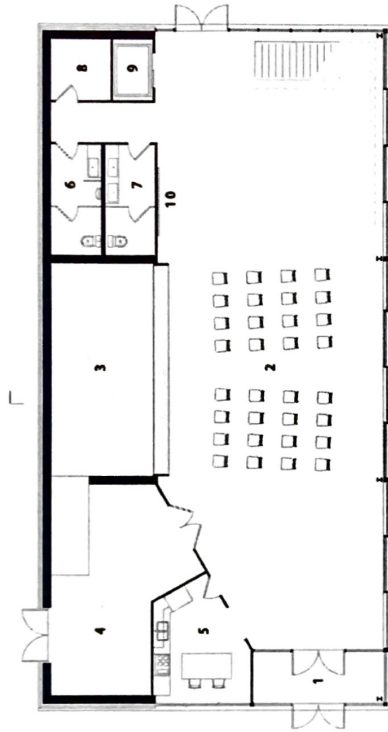
The mission of Bruce D. Nesbitt African American Cultural Center is to provide a network of programs and support services promoting the individual, social, cultural and academic well-being of Illinois' African American students. This architectural design concept holistically promotes the African American student community through space and aesthetic. The center is designed to be both a home base and a satellite in its relationship to the campus and beyond. Iconic in its simplicity, the center will become a symbol on campus for cultural progress.

OUTWARDLY FOCUSED DESIGN

The primary design focus of the center is to open itself to the surrounding campus. This is architecturally achieved through an open-plan ground level enclosed by sliding glass panels. The first level's multipurpose event space orients itself to a stage along the north wall. In the same way, when the panels are open, Nevada Street orients itself to the building as the ground level becomes the stage. This operability serves campus wide events such as the annual Taste of Nevada block party. Private functions of the center are housed in the second level, a wood-clad mass that seemingly floats above the transparent first level.

EFFICIENT MULTIPURPOSE SPACE

The center is designed to house a variety of events at a wide range of scales. The three primary gathering spaces consist of the main event space, the community lounge, and the seminar / conference room. These three spaces accommodate events small and large, formal and informal. Supporting these spaces are the stage, backstage, kitchen, bathrooms, elevator, and service spaces. Additional services are provided to students in the study / computer lab and the designated recording studio for the WBML radio station. An office is also provided for the director of the program.



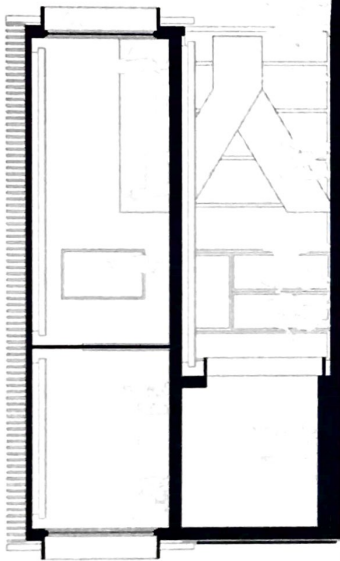
First Floor - 4,400 sq ft



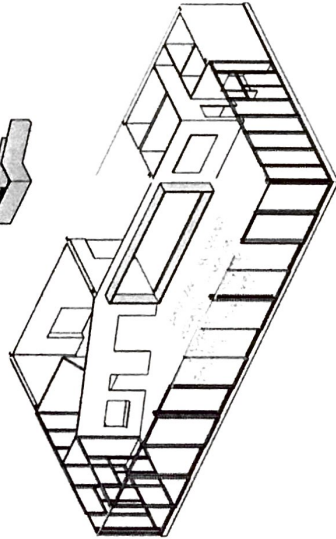
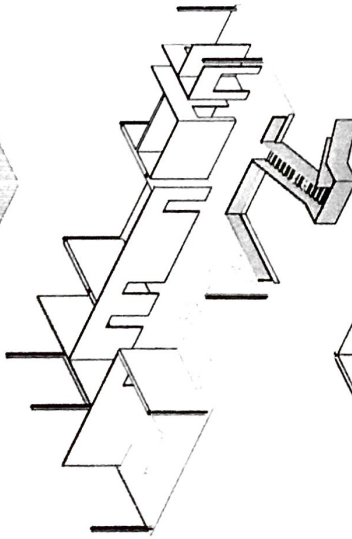
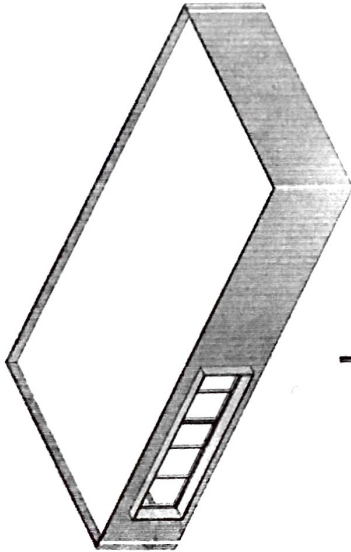
Second Floor - 4,100 sq ft

KEY:

- 1 Main Entrance
- 2 Event Space
- 3 Stage
- 4 Backstage
- 5 Kitchen/Service
- 6 Men's Toilet
- 7 Women's Toilet
- 8 Mechanical
- 9 Elevator
- 10 Mural
- 11 Community Lounge
- 12 WBML Radio Studio
- 13 Seminar / Conference
- 14 Director's Office
- 15 Study / Computer Lab
- 16 Men's Toilet
- 17 Women's Toilet
- 18 Mechanical
- 19 Elevator
- 20 Open To Below



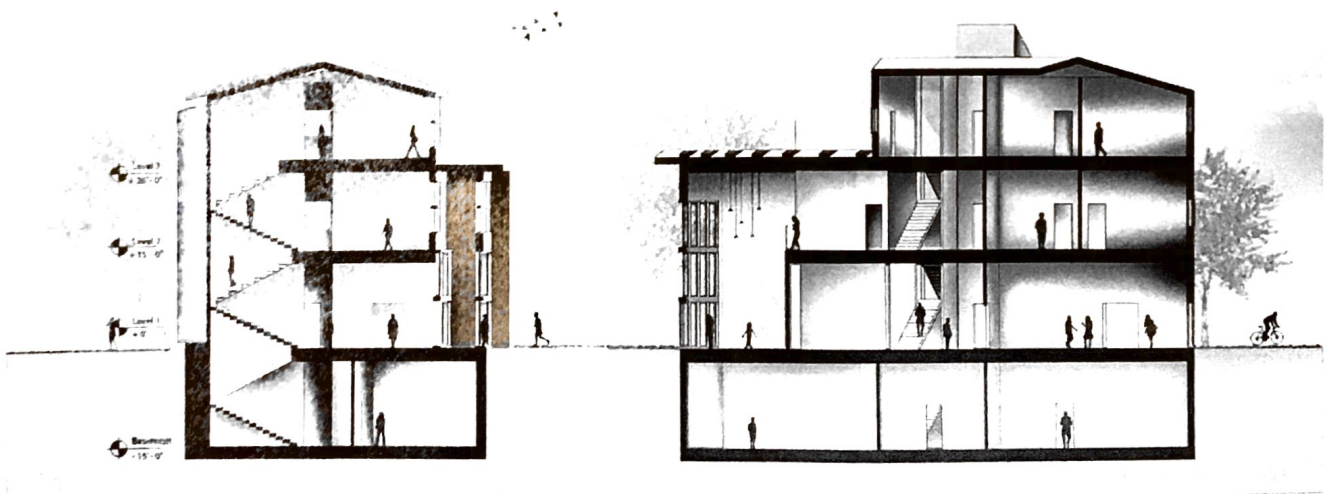
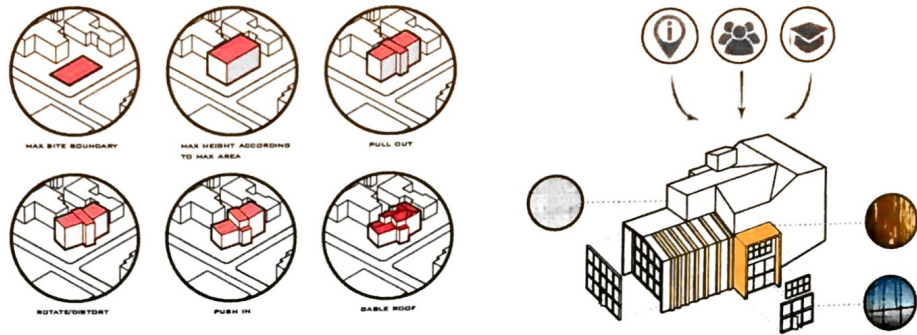
Section A - A' - Looking East

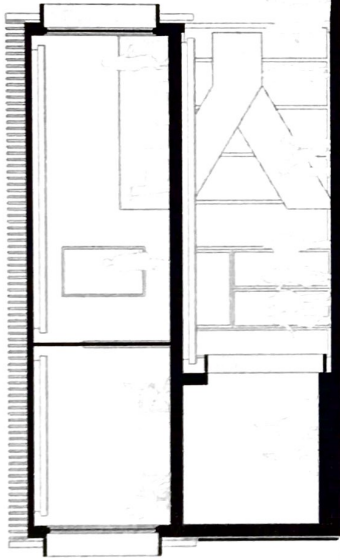


Exploded Axonometric
Looking North - West

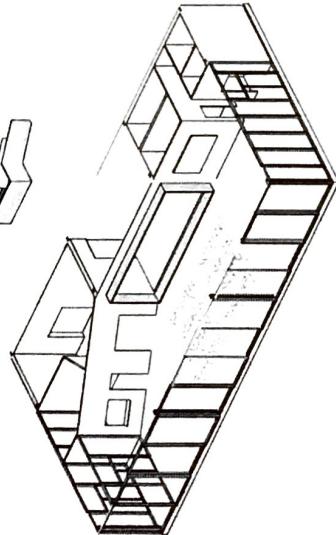
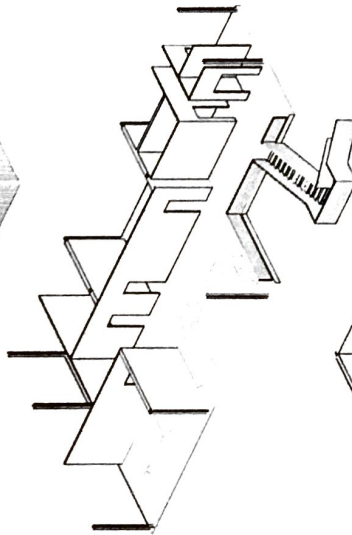
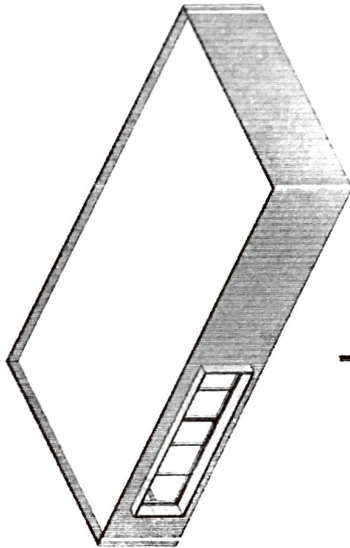
Bruce Nesbitt African American Cultural Center

Alluding to African-American's long history of distortion, the building forms distorted angle from the original building. This is also applied to the gable roof in both different direction and height. The gable roof preserves the scheme of the surrounding neighborhood and its original form. Considering diverse school culture and dynamic African-American cultural background, the building utilizes different types of materials, such as curtain wall, concrete, and wooden rouver. Considering floating population, new BNAACC's welcoming spaces face toward the main quad. By placing the gallery on the southern west side of the building, the building synthesizes maximum space occupancy.

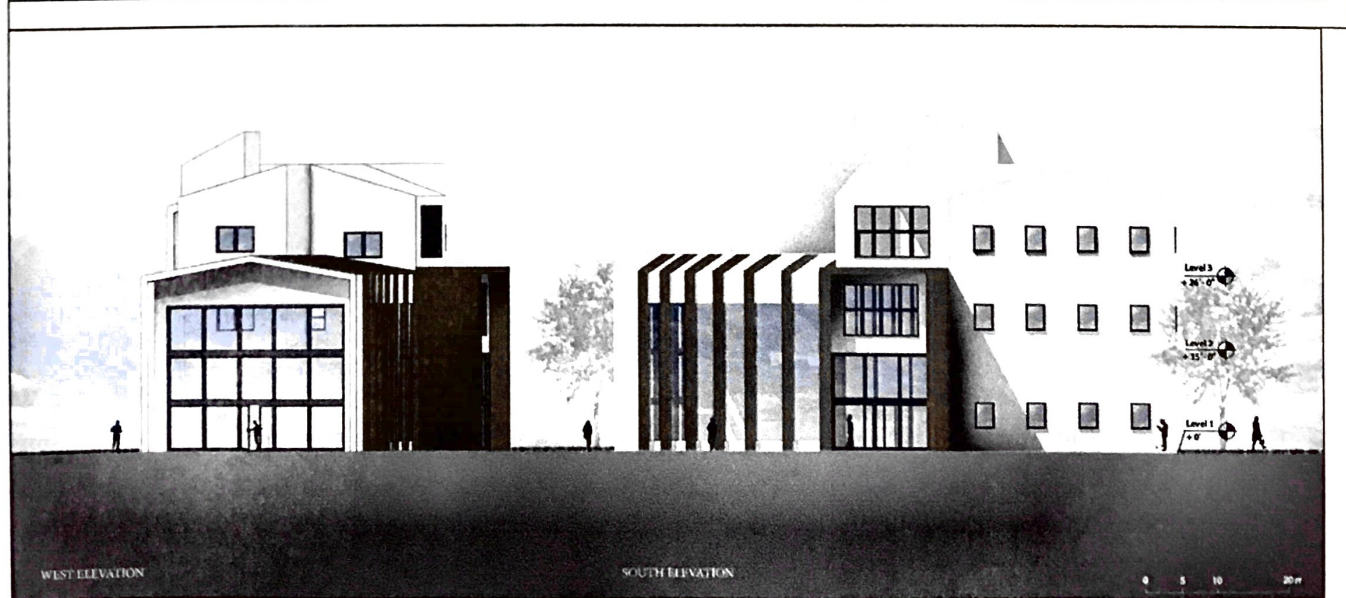
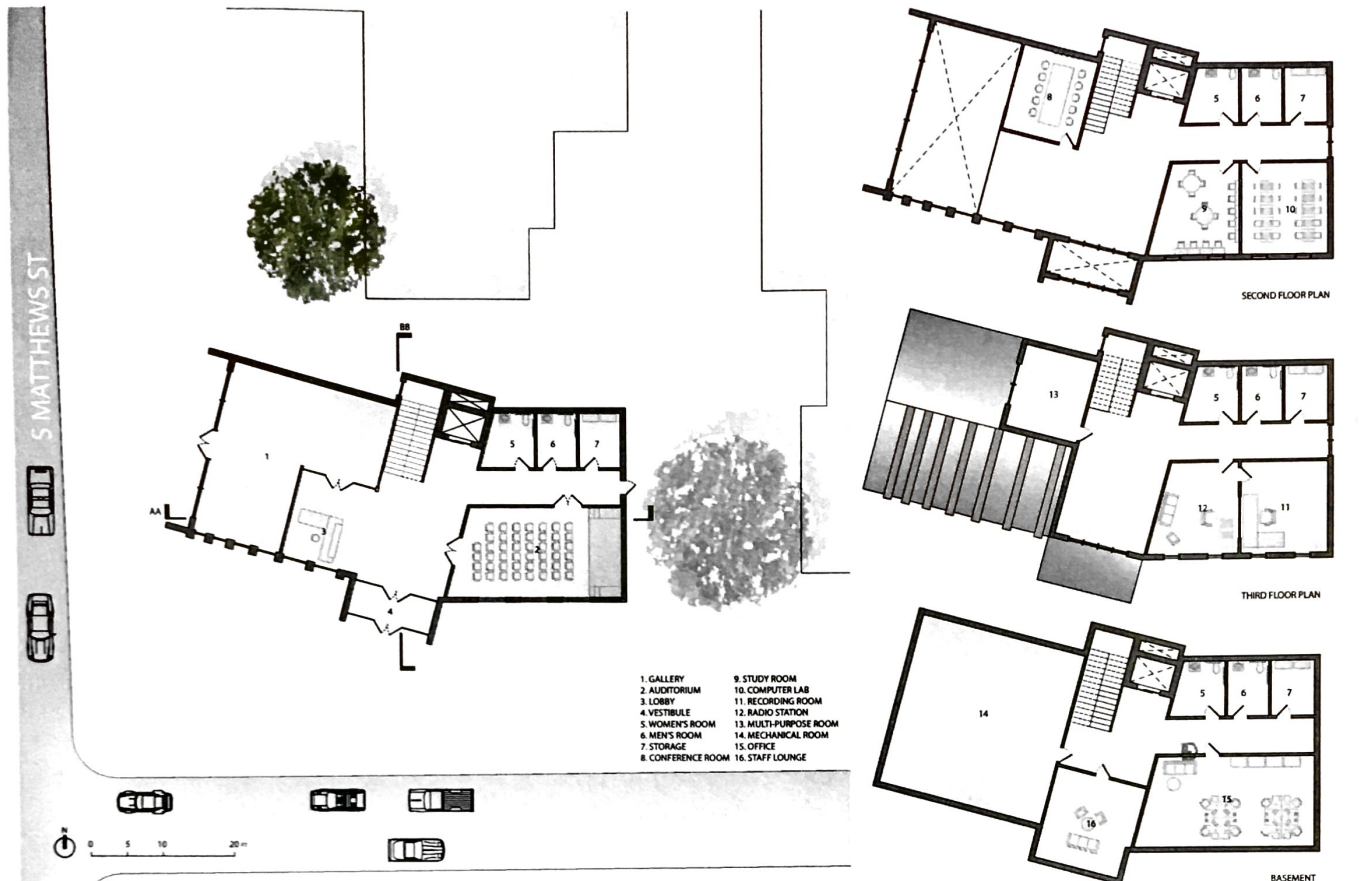




Section A - A' - Looking East



Exploded Axonometric
Looking North - West



Bruce Nesbitt African American Cultural Center Proposal

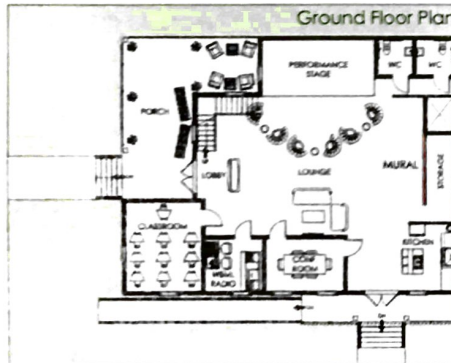
Team 7



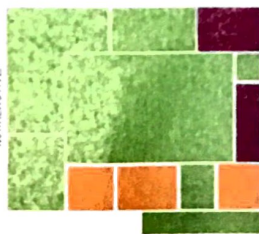
Top Floor Plan



Ground Floor Plan



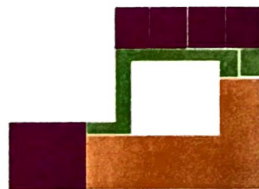
NEVADA ST.



NEVADA ST.

LEGEND
 PUBLIC
 SEMI-PUBLIC
 PRIVATE

FIRST FLOOR



SECOND FLOOR



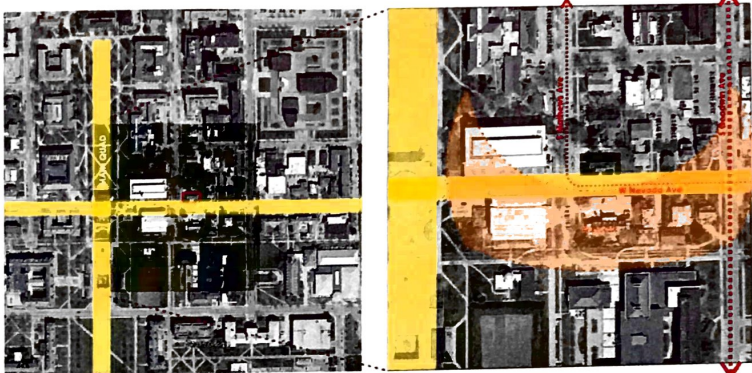
The BNAACC is a place of cultural heritage that fuses traditional details with a modern approach. The exterior of the building is clad in brick to remain harmonious with its surroundings; however, a curtain wall enhances part of the upper level facade. Upon entering from Mathews Ave., visitors can instantly get a view of the original BNAACC mural as it creates a backdrop for the reception. A kitchen and conference room on the first floor are spacious enough for Food for the Soul events, and a room is dedicated to the WBML station as well. A central lounge, computer lab, and reading nooks allow for study space throughout the building, while administrative offices are on the quiet second floor. Designed with BNAACC programs in mind, our proposal creates a beautiful building that celebrates the African American culture.



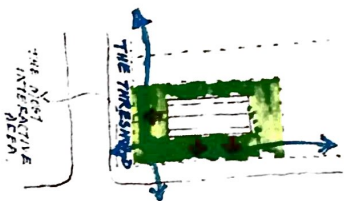
Bruce D. Nesbitt African American Cultural Centre (BNAACC)



View along the East West axis from West side



Bruce D. Nesbitt African American Cultural Centre (BNAACC) has been working to promote African - American culture through its various activities. Over the course of 45 years, the building on 708 South Mathews avenue has seen countless graduates, served and secured itself in the memories of them. The activities of the institute grew with time and the old age got certain tolls on the building and as such, the requirement of a new building was established. The building, as a memento of so many graduates should not be totally erased at the same time the need for the ever growing demand can not be denied. How can such duality be addressed?



Conceptual Development



Present Condition
the building, with its residential character hardly recognizes itself as a public building. It sits on a plot and visually speaks as if demanding privacy. However, it has certain cozy 'home-ness' to it, which may impart sense of 'belonging-ness' to its user.



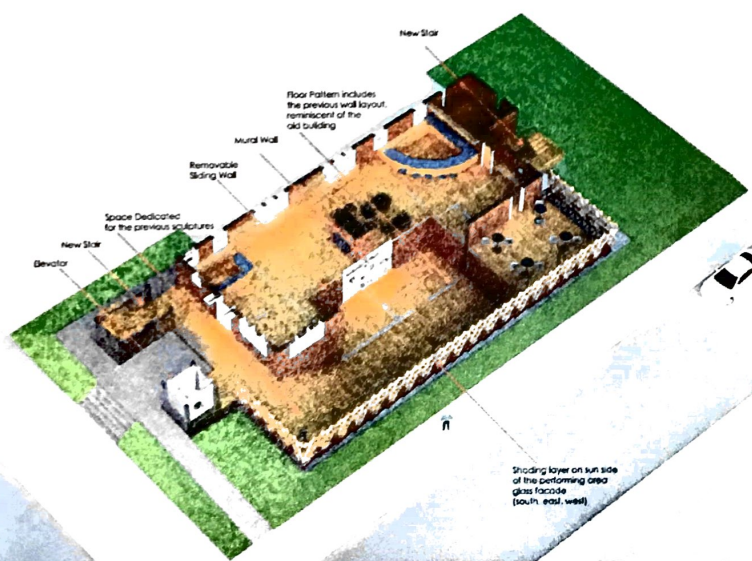
Phase 01: Breaking The Wall
- Replanting of the trees to make way for the expansion
- Breaking the central portion of the southern wall to enhance visibility thereby increasing visual interaction from the road side.



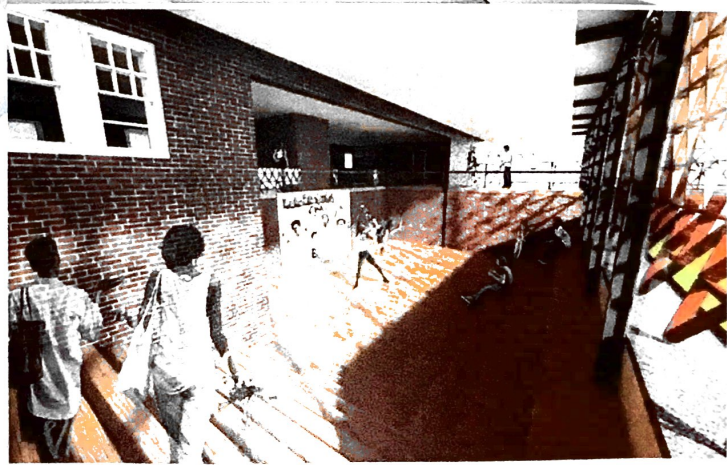
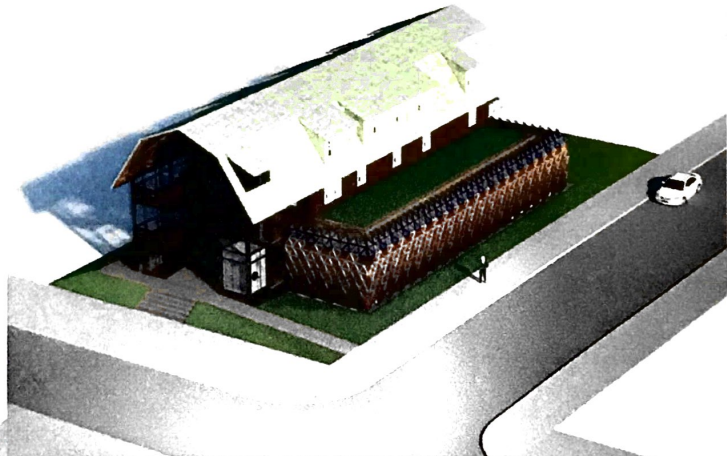
Phase 02: Connecting Performance Space
- Introduction of sunken performance space visible from the roadside thereby promotion of African American culture can be achieved
- Mural as background of the stage, creates a identity of the performing area

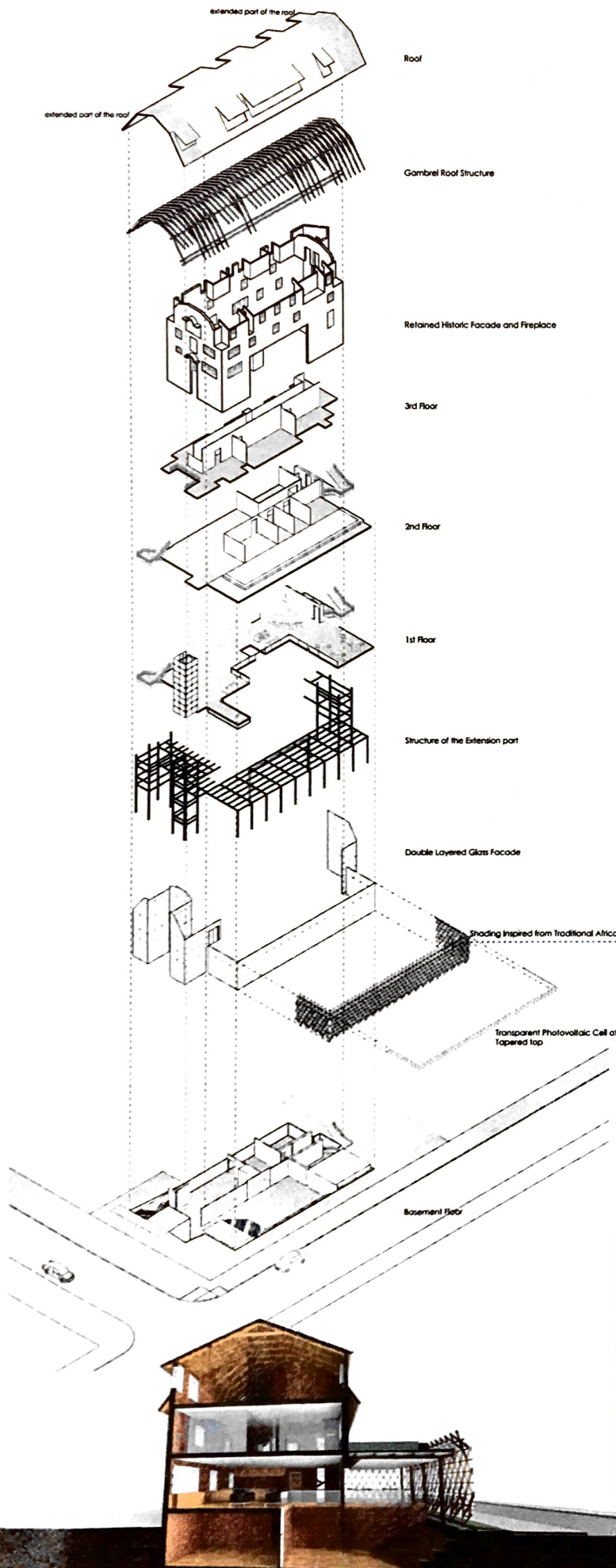


Phase 03: Adding Transparent Skin
- Plugging glass mass to the southern facade on performance area for protection from elements without obstructing the view
- bringing out vertical circulations onto east and west glass boxes to free the internal space and also for adding the public character to it.

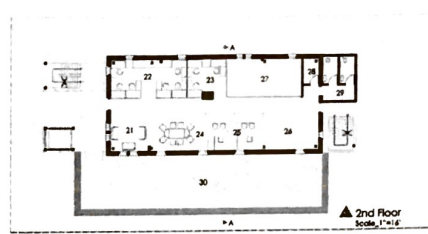


Axonometric view of the basement and first floor showing the new space configurations

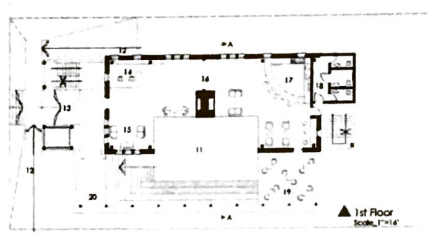




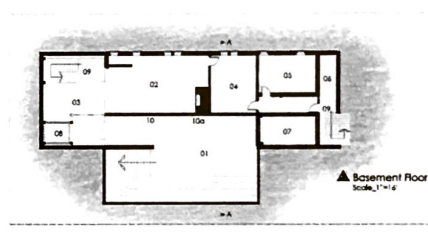
- 31 Study
- 32 Closed Stock
- 33 Reading Area
- 34 Open Stock
- 35 Seminar
- 36 Computer Lab
- 37 Toilets



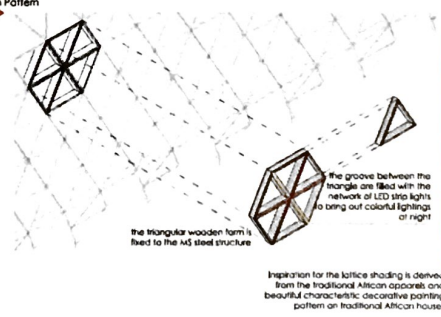
- 21 Waiting
- 22 General Office
- 23 Program Dept
- 24 Meeting
- 25 Mr. & Director's room
- 26 Server, Broadcasting Equipments
- 27 Radio Studio
- 28 Store
- 29 Toilets
- 30 Terrace and Green Roof



- 11 Performance Area Below
- 12 Access Ramp
- 13 Entry
- 14 Reception & Information
- 15 Waiting
- 16 Lounge
- 17 Cafe
- 18 Label Area
- 19 Outdoor Lounge
- 20 Space for Sculpture



- 01 Performance Area
- 02 Multipurpose (Wall (10) can be removed to connect it to performance area)
- 03 Lobby
- 04 Storage
- 05 Chiller/Boiler
- 06 Meter Space
- 07 Water Harvesting Tank
- 08 Belevator
- 09 Stair
- 10 Removable Wall (Slide toward arrow)
- 10a Mural Wall





LEED 2009 for New Construction and Major Renovations

Project Checklist

Sustainable Sites Possible Points: 26

Y	?	N	
Y			Prereq 1 Construction Activity Pollution Prevention
			Credit 1 Site Selection
			Credit 2 Development Density and Community Connectivity
			Credit 3 Brownfield Redevelopment
			Credit 4.1 Alternative Transportation—Public Transportation Access
			Credit 4.2 Alternative Transportation—Bicycle Storage and Changing Rooms
			Credit 4.3 Alternative Transportation—Low-Emitting and Fuel-Efficient Vehicles
			Credit 4.4 Alternative Transportation—Parking Capacity
			Credit 5.1 Site Development—Protect or Restore Habitat
			Credit 5.2 Site Development—Maximize Open Space
			Credit 6.1 Stormwater Design—Quantity Control
			Credit 6.2 Stormwater Design—Quality Control
			Credit 7.1 Heat Island Effect—Non-roof
			Credit 7.2 Heat Island Effect—Roof
			Credit 8 Light Pollution Reduction

Water Efficiency Possible Points: 10

Y	?	N	
Y			Prereq 1 Water Use Reduction—20% Reduction
			Credit 1 Water Efficient Landscaping
			Credit 2 Innovative Wastewater Technologies
			Credit 3 Water Use Reduction

Energy and Atmosphere Possible Points: 35

Y	?	N	
Y			Prereq 1 Fundamental Commissioning of Building Energy Systems
			Prereq 2 Minimum Energy Performance
			Prereq 3 Fundamental Refrigerant Management
			Credit 1 Optimize Energy Performance
			Credit 2 On-Site Renewable Energy
			Credit 3 Enhanced Commissioning
			Credit 4 Enhanced Refrigerant Management
			Credit 5 Measurement and Verification
			Credit 6 Green Power

Materials and Resources Possible Points: 14

Y	?	N	
Y			Prereq 1 Storage and Collection of Recyclables
			Credit 1.1 Building Reuse—Maintain Existing Walls, Floors, and Roof
			Credit 1.2 Building Reuse—Maintain 50% of Interior Non-Structural Elements
			Credit 2 Construction Waste Management
			Credit 3 Materials Reuse

Materials and Resources, Continued Possible Points: 15

Y	?	N	
			Credit 4 Recycled Content
			Credit 5 Regional Materials
			Credit 6 Rapidly Renewable Materials
			Credit 7 Certified Wood

Indoor Environmental Quality Possible Points: 15

Y	?	N	
Y			Prereq 1 Minimum Indoor Air Quality Performance
			Prereq 2 Environmental Tobacco Smoke (ETS) Control
			Credit 1 Outdoor Air Delivery Monitoring
			Credit 2 Increased Ventilation
			Credit 3.1 Construction IAQ Management Plan—During Construction
			Credit 3.2 Construction IAQ Management Plan—Before Occupancy
			Credit 4.1 Low-Emitting Materials—Adhesives and Sealants
			Credit 4.2 Low-Emitting Materials—Paints and Coatings
			Credit 4.3 Low-Emitting Materials—Flooring Systems
			Credit 4.4 Low-Emitting Materials—Composite Wood and Agrifiber Products
			Credit 5 Indoor Chemical and Pollutant Source Control
			Credit 6.1 Controllability of Systems—Lighting
			Credit 6.2 Controllability of Systems—Thermal Comfort
			Credit 7.1 Thermal Comfort—Design
			Credit 7.2 Thermal Comfort—Verification
			Credit 8.1 Daylight and Views—Daylight
			Credit 8.2 Daylight and Views—Views

Innovation and Design Process Possible Points: 6

Y	?	N	
			Credit 1.1 Innovation in Design: Specific Title
			Credit 1.2 Innovation in Design: Specific Title
			Credit 1.3 Innovation in Design: Specific Title
			Credit 1.4 Innovation in Design: Specific Title
			Credit 1.5 Innovation in Design: Specific Title
			Credit 2 LEED Accredited Professional

Regional Priority Credits Possible Points: 4

Y	?	N	
			Credit 1.1 Regional Priority: Specific Credit
			Credit 1.2 Regional Priority: Specific Credit
			Credit 1.3 Regional Priority: Specific Credit
			Credit 1.4 Regional Priority: Specific Credit
			Total

Possible Points: 110
 Certified 40 to 49 points Silver 50 to 59 points Gold 60 to 79 points Platinum 80 to 110